

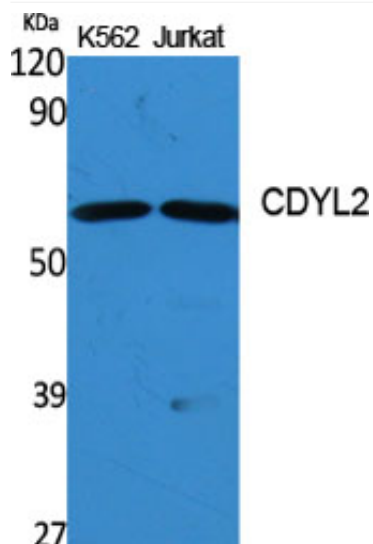


CDYL2 Polyclonal Antibody

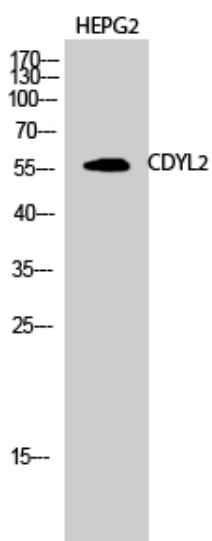
Catalog No	YP-Ab-01604
Isotype	IgG
Reactivity	Human;Rat;Mouse;
Applications	WB;IHC;IF;ICC;ELISA
Gene Name	CDYL2
Protein Name	Chromodomain Y-like protein 2
Immunogen	The antiserum was produced against synthesized peptide derived from human CDYL2. AA range:31-80
Specificity	CDYL2 Polyclonal Antibody detects endogenous levels of CDYL2 protein.
Formulation	Liquid in PBS containing 50% glycerol, 0.5% BSA and 0.02% sodium azide.
Source	Polyclonal, Rabbit,IgG
Purification	The antibody was affinity-purified from rabbit antiserum by affinity-chromatography using epitope-specific immunogen.
Dilution	WB: 1/500 - 1/2000. IHC: 1/100 - 1/300. ICC: 1/200 - 1/1000. ELISA: 1/20000.. IF 1:50-200
Concentration	1 mg/ml
Purity	≥90%
Storage Stability	-20°C/1 year
Synonyms	CDYL2; Chromodomain Y-like protein 2; CDY-like 2
Observed Band	56kD
Cell Pathway	Nucleus .
Tissue Specificity	Ubiquitously expressed.
Function	similarity:Contains 1 chromo domain.,tissue specificity:Ubiquitously expressed.,
Background	similarity:Contains 1 chromo domain.,tissue specificity:Ubiquitously expressed.,
matters needing attention	Avoid repeated freezing and thawing!
Usage suggestions	This product can be used in immunological reaction related experiments. For more information, please consult technical personnel.



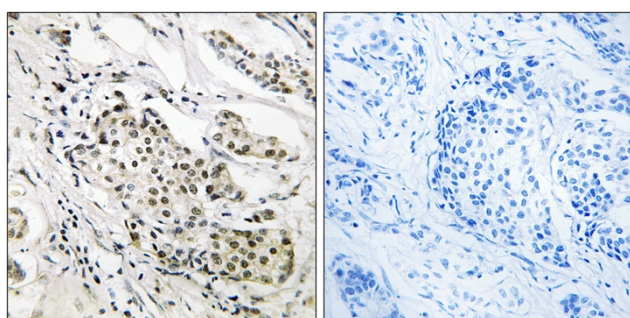
Products Images



Western Blot analysis of various cells using CDYL2 Polyclonal Antibody diluted at 1:1000 cells nucleus extracted by Minute TM Cytoplasmic and Nuclear Fractionation kit (SC-003, Inventbiotech, MN, USA).



Western Blot analysis of HEPG2 cells using CDYL2 Polyclonal Antibody diluted at 1:1000 cells nucleus extracted by Minute TM Cytoplasmic and Nuclear Fractionation kit (SC-003, Inventbiotech, MN, USA).



Immunohistochemistry analysis of paraffin-embedded human breast carcinoma, using CDYL2 Antibody. The picture on the right is blocked with the synthesized peptide.